



BEAUFORT GREEN



Peterborough Road, SW6

£525,000

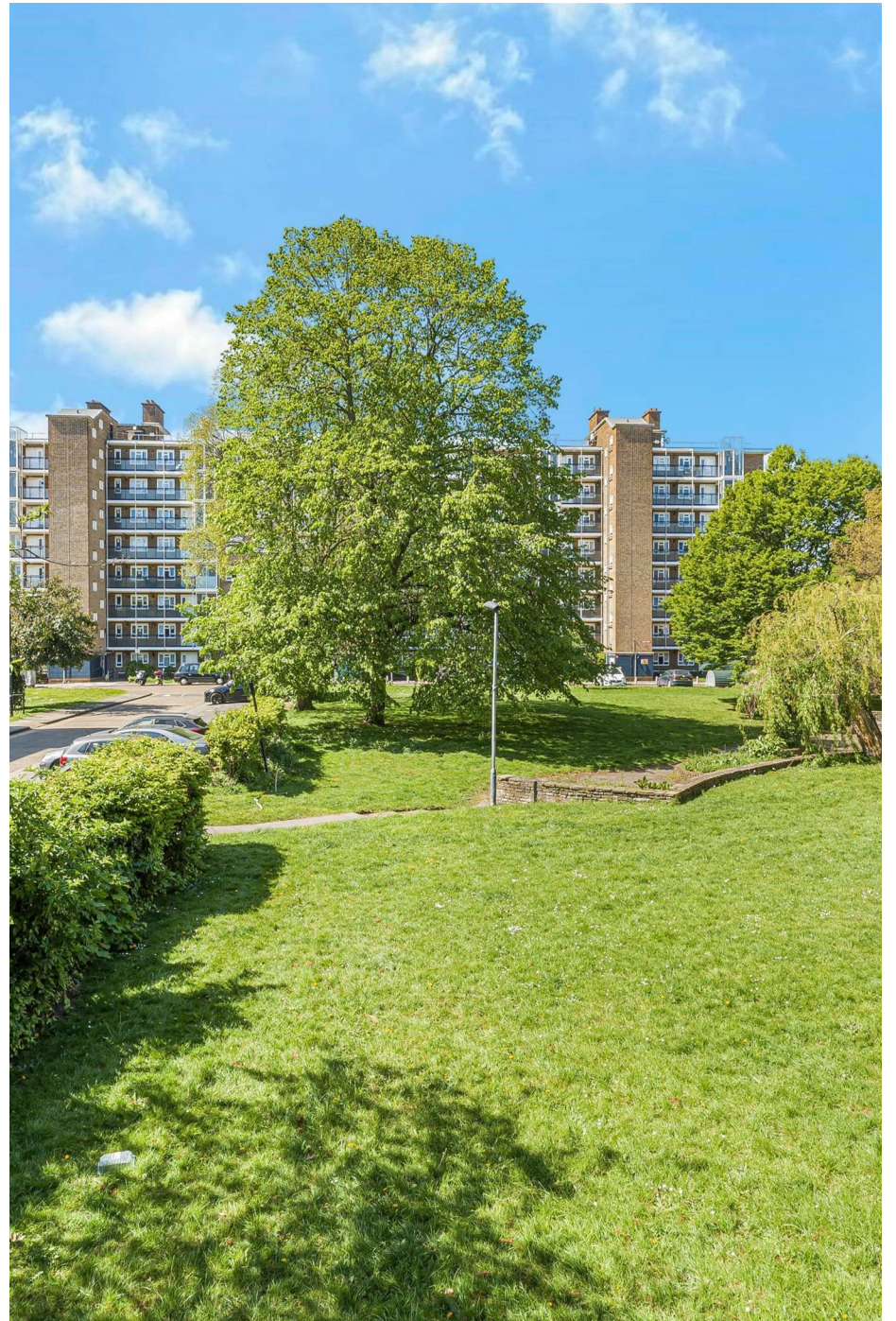


Set within the sought-after Sullivan Court development in the heart of SW6, with views overlooking South Park. This spacious three-bedroom first floor apartment offers well-balanced accommodation, excellent natural light, and superb potential for modernisation.

The property features a generous reception room with ample space for both relaxing and dining, a separate fitted kitchen, three well-proportioned bedrooms, and a family bathroom. Positioned on the first floor, the apartment benefits from an elevated outlook and a practical layout ideal for families, professionals, or investors alike.

Fulham is renowned for its leafy streets, vibrant cafés, and excellent transport connections, with nearby stations providing swift access across London. Residents of Sullivan Court enjoy close proximity to green open spaces, the River Thames, highly regarded schools, and the amenities of the Fulham Road and New King's Road.

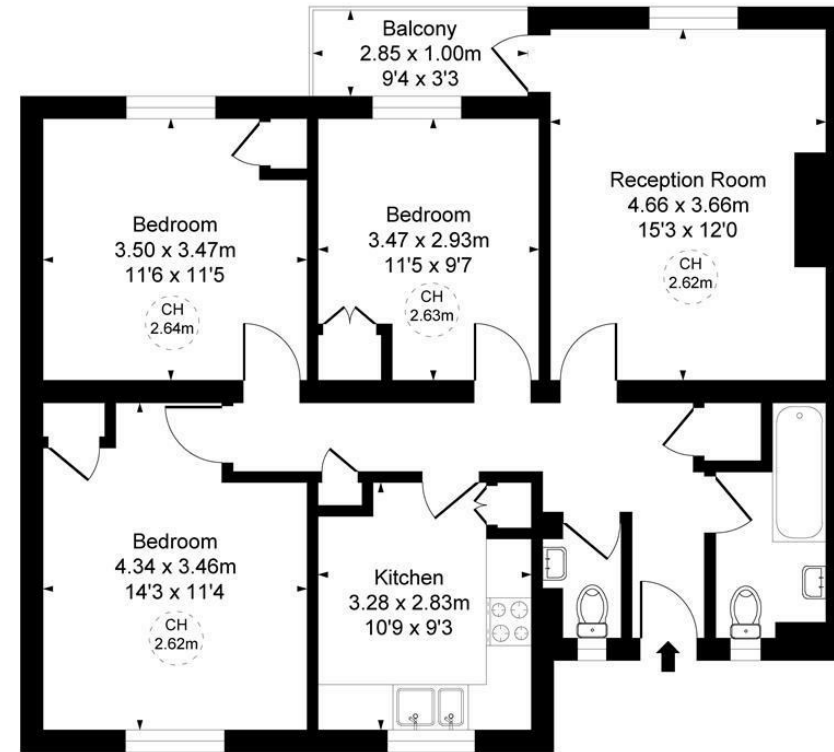




BEAUFORT GREEN

BEAUFORT GREEN

Sullivan Court, SW6
Approximate Gross Internal Area
84.07 sq m / 905 sq ft
(CH = Ceiling Heights)



Fourth Floor

At a Glance.

- Three Double Bedroom Apartment
- Within 10 Minute Walk To Parsons Green Underground Station
- Over 900sq.ft Of Accommodation
- Views Overlooking South Park
- Bathroom
- Balcony

This floor plan is provided for illustrative purposes only and has been prepared in accordance with the RICS Code of Measuring Practice. It is not to scale, and all measurements and areas are approximate and should not be relied upon for accuracy. The plan should not be used for valuation or other decision-making purposes. Whilst every effort has been made to ensure accuracy, no responsibility is accepted for any errors or omissions.

BEAUFORT GREEN

02074594100

charlie@beaufortgreen.co.uk

263 New Kings Road
London
SW16 1DB